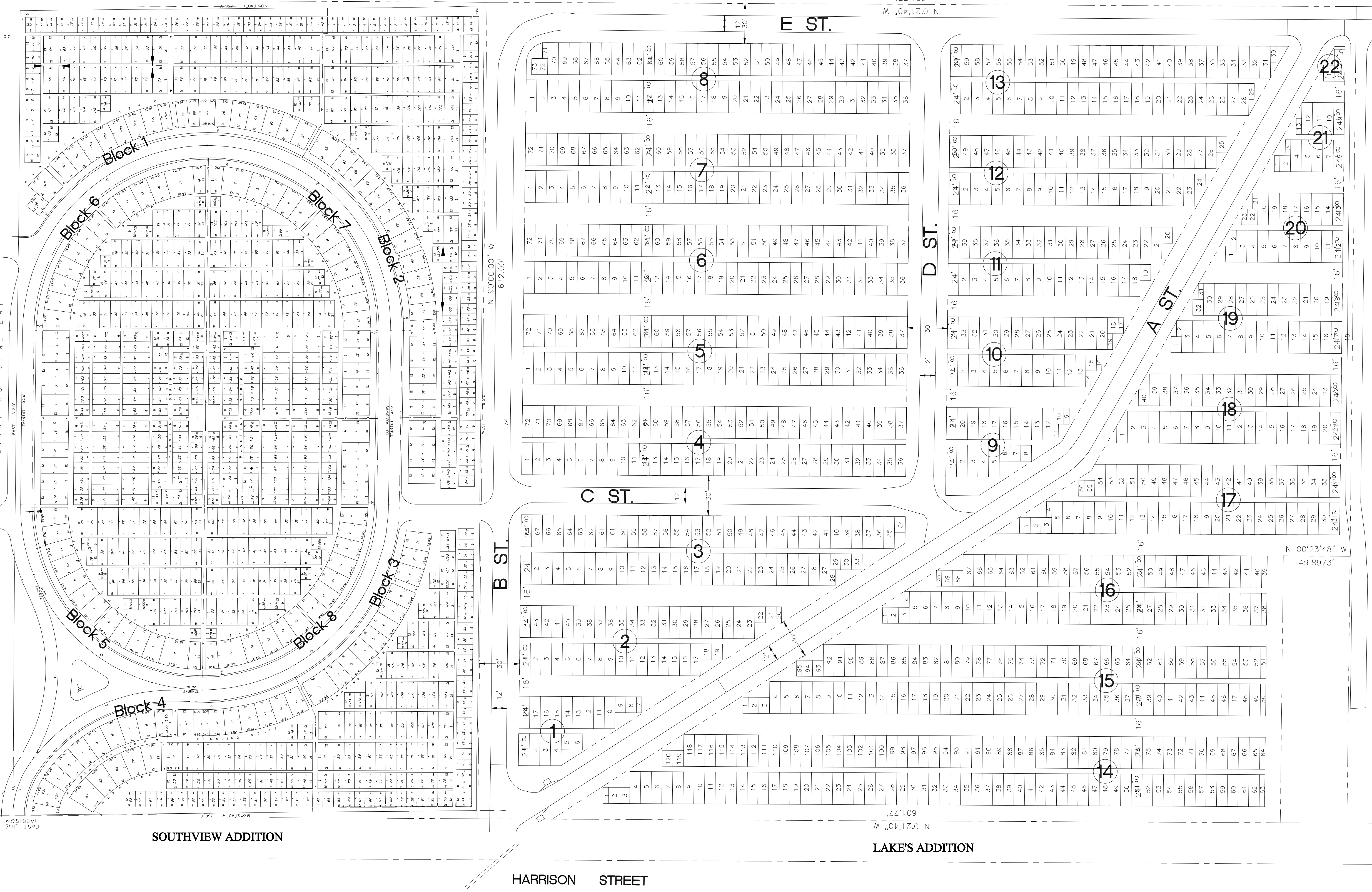
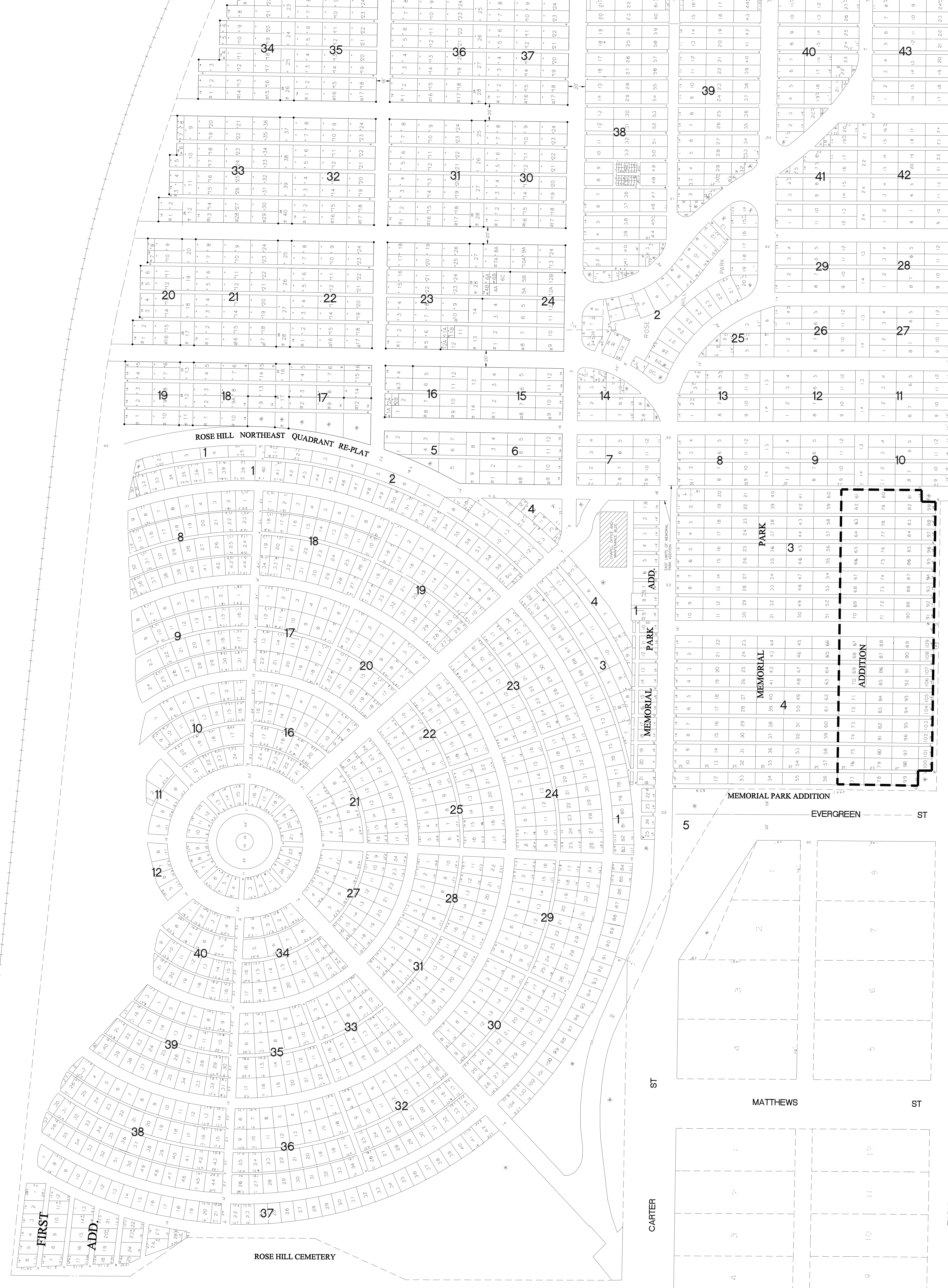
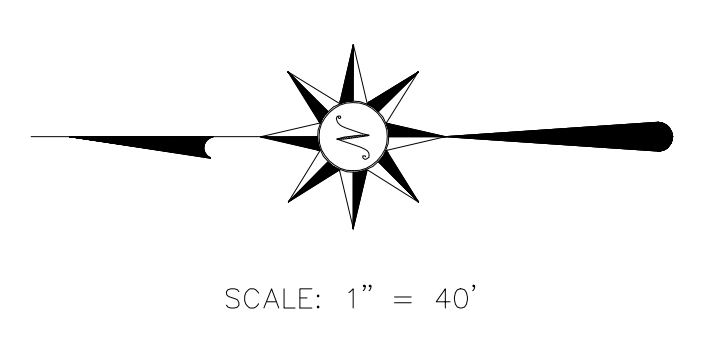


ROSE HILL NORTHEAST QUADRANT RE-PLAT



ROSE HILL CEMETERY

SHENANDOAH, IOWA



GENERAL NOTES:

- FOR LANDSCAPE PURPOSES ONLY, NOT FOR BURIALS.
- BLOCK 2 IS KNOWN AS ROSE HILL PARK. BLOCK 2 TO BE PARK AREA BUT BURIALS PERMITTED IF NOT DISTURBING ODD TREES OR PLANTING SITES. BURIALS SUBJECT TO BOARD OR CEMETERY BOARD SECTION. NO STANDING HEAD STONES PERMITTED, ONLY FLAT HEAD STONES PROPERLY LAD FLUSH TO GROUND SURFACE IS PERMITTED.
- TYPE, KIND AND QUANTITY OF TREES, SHRUBS ETC. OR OTHER LANDSCAPING PROJECTS TO BE BY DECISION OF CEMETERY BOARD AND SECTION.
- LOTS NO. 61 TO 99 INCLUSIVE IN BLOCK 3 & 4 OF LOTS NO. 61 TO 109 INCLUSIVE, IN BLOCK 4 OF MEMORIAL PARK ADD. IS PROPERTY OF ST. MARY'S CATHOLIC CHURCH.
- LOTS NO. 10, 11, & 12 OF BLOCK 4 OF SECOND ADD. REVERED, SHALL HAVE NO STANDING HEAD STONES, ONLY FLAT HEADSTONES PROPERLY LAD FLUSH TO GROUND SURFACE IS PERMITTED.
- THE WEST LINE OF BLOCK 4 & THE EAST LINE OF BLOCK 5 OF MEMORIAL PARK ADD. COINCIDES WITH THE EAST PROPERTY LINE OF EVERGREEN ST. THIS BEING DUE TO REQUIREMENT OF 6' WALKWAY CAUSING ORIGINAL ELEV. OF STREET TO BE MOVED WEST 30'.
- BLOCK 2 ROSE HILL PARK FOR LANDSCAPE ONLY ON ALL OF LOTS 13, 14, 20, 26, 30, 34, AND 1 ALSO ON NORTH 7' OF LOTS 35 AND 1 AND ON WEST 14' OF LOT 2.

ROSE HILL NORTHEAST QUADRANT RE-PLAT

- ALL WALKWAYS ARE FOUR FEET WIDE.
- ALL BLOCK CORNERS FINED WITH 3/8" DIA. REBAR 18" LONG.
- ALL LOT CORNERS FINED WITH 1/2" DIA. REBAR 12" LONG.
- ALL PAVING 12" WIDE UNLESS NOTED OTHERWISE.

LAKE'S ADDITION:

- BLOCKS 1 THROUGH 13: STONES NEXT TO WALKWAYS AND ROADWAYS, NO STONES IN MIDDLE OF LOTS UNLESS FLUSH TO GROUND, 36" HEIGHT RESTRICTION, NO PERMANENT FLOWER POTS UNLESS MOUNTED ON STONE.
- BLOCKS 14 THROUGH 22: ALL STONES OR MARKERS FLUSH TO GROUND, ALL STONES OR MARKERS NEXT TO WALKWAYS AND ROADWAYS, NO PERMANENT FLOWER POTS OR CONTAINERS.
- ALL PLANTINGS HAVE TO BE APPROVED BY CEMETERY BOARD AND SECTION, SECTION DECIDES WHERE PLANTINGS WILL BE ALLOWED.
- UNLESS THEY ARE IN CONFLICT WITH THESE RULES, ALL OTHER RULES AND REGULATIONS APPLY IN ACCORDANCE 5002 ACRES, WARE OR LESS.

SOUTHVIEW ADDITION:

A PART OF THE SOUTH 5.79 ACRES OF THE E.A. 25th, N.W. 1/4, SECTION 20, T8N, R30W, 5TH PM, IN THE CITY OF SHENANDOAH, POLK COUNTY, IOWA, WHICH IS MORE PARTICULARLY DESCRIBED AS FOLLOWS:

BEGINNING AT AN IRON PIPE MARKING THE SOUTHWEST CORNER OF THE SHENANDOAH CEMETERY WHICH PIPE ALSO MARKS A POINT ON THE CENTERLINE OF SAID SECTION 20, T8N, R30W AND THE EAST CORPORATION LINE OF THE CITY OF SHENANDOAH, THENCE S07°04'00" E, 506 FEET, THENCE WEST 812.0 FEET TO THE EAST RIGHT-OF-WAY LINE OF HARRISON STREET, THENCE NORTH 70°14'00" E, 355 FEET ALONG SAID RIGHT-OF-WAY LINE TO THE SOUTH LINE OF THE SHENANDOAH CEMETERY, THENCE EAST 812.0 FEET TO POINT OF BEGINNING, SAID TRACT CONTAINS 5.002 ACRES, WARE OR LESS.

A	B	C	D
Δ = 235°	Δ = 64°00'	Δ = 84°00'	Δ = 90°00'
T = 23.75'	T = 68.89'	T = 68.89'	T = 141.00'
R = 37.86'	R = 133.47'	R = 133.47'	R = 141.00'
Δ = 31.96'	Δ = 131.17'	Δ = 131.17'	Δ = 238.49'
D = 84.405°	D = 44.253°	D = 44.253°	D = 40.635°

- ALL WALKWAYS ARE TWO FEET WIDE UNLESS NOTED OTHERWISE.
- ALL LOT CORNERS FINED, EXCEPT ODD LOTS.
- CORNER OF CEMETERY IS 30' WEST AND 145' SOUTH OF THE N.E. CORNER.
- TANGENTS BETWEEN POINTS OF CURVE LABELED AS SUCH.
- VERTICAL NUMBERS (N) REFER TO DIMENSIONS, (S) TO LOT NUMBERS.