

HISTORY

The Evergreen Cemetery was created on May 3, 1912 with the passage of city ordinance No. 175.

This 40+ acre site in the Lowell area was created by the transfer to the City of various mining claims. The Evergreen Cemetery was Bisbee's second cemetery, the first being located on Brewery Gulch in what is now City Park. Concerns for public health due to contamination of well water drove the need to find a new and permanent cemetery location. Burials ceased in the Gulch and the old graves were moved to the new location by 1914.

The Evergreen Cemetery in many ways reflects the sociology and ethnography of Bisbee's earliest days. There are tall monuments to its pioneers like George Warren and mausoleums to those families whose influence profoundly shaped the character of the town.

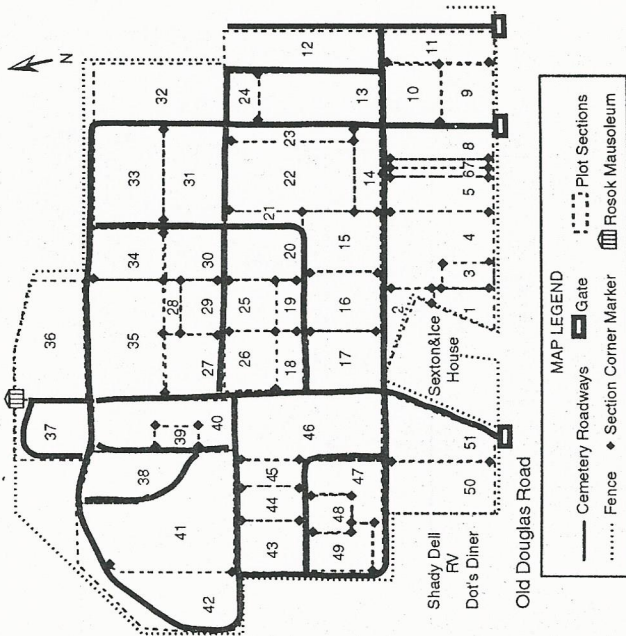
Bisbee was a city of immigrants for whom the social and fraternal organizations were the lifelines that helped them settle here. Approximately 60% of the cemetery is allocated to private organizational groups. There's a large religious section and also a special section for war veterans where individuals from all conflicts from the Civil War to Vietnam are buried.

There is the striking and poignant section called Baby Land where all the graves are half size, and a remarkable number of unmarked graves reflecting the often solitary and transient nature of the people who were Bisbee's earliest citizens.

The Evergreen Cemetery is located off the HWY 80 Traffic Circle. Turn right at the gas station onto Old Douglas Road and it's across from the Lowell Middle School.

Evergreen Cemetery Map

City of Bisbee, Arizona



KEY TO PLOT SECTION NUMBERS

- | #-Name(*) | #-Name(*) |
|---|--|
| 1- New Benevolent and Protective Order of Elks(7) | 26-Knights Of Pythias(15) |
| 2- New General(7) | 27-Ancient Order of United Workmen(15) |
| 3- Serbian(25) | 28-Loyal Orange Lodge(17) |
| 4- New General(25) | 29-Loyal Order Of Moose(17) |
| 5- Loyal Order Of Moose(24) | 30-Catholic(21) |
| 6- Knights of Pythias(24) | 31-General(29) |
| 7- New General(24) | 32-Northeast Catholic(23) |
| 8- Veterans(24) | 33-Northeast Catholic(22) |
| 9- Knights of Columbus(24) | 34-Catholic(18) |
| 10-American Legion(7) | 35-Old Catholic(14) |
| 11-Northeast General B(31) | 36-New Catholic(6) |
| 12-Northeast General A(31) | 37-St. Stephen Nemanja Church(30) |
| 13-East General(28) | 38-Northwest General(5B) |
| 14-East General(28) | 39-Baby Land(5B) |
| 15-Loyal Order Of Moose(20) | 40-Northwest General(5B) |
| 16-General(16) | 41-Northwest General(5-5A) |
| 17-Independent Order of Odd Fellows(16) | 42-New Northwest General(1) |
| 18-Independent Order of Odd Fellows(16) | 43-Improved Order of Red Men(10) |
| 19-General(16) | 44-Woodmen Of the World(10) |
| 20-General(19) | 45-West General(10) |
| 21-General(7) | 46-Old Masonic(11&12) |
| 22-County(7) | 47-Old Benevolent and Protective Order of Elks(13) |
| 23-East General(7) | 48-The Fraternal Brotherhood(13) |
| 24-East General(26) | 49-Fraternal Order of Eagles(13) |
| 25-General(17) | 50-Benevolent and Protective Order of Elks (8) |
| | 51-Masonic(8) |

(* Master Cemetery Map page number)
© 2003 Sutton Engineering Consultants: A. Sutton 520 432 9179 (r10/03)



Information, Regulations,
Map and Cemetery History
of Bisbee, Arizona's
Memorial Site

Listed in
THE NATIONAL REGISTER
OF HISTORIC PLACES
October 7, 2005



Department of Public Works

Phone: (520) 432 • 6002
Fax: (520) 432 • 6069
www.cityofbisbee.com